

Screening and Brief Intervention activities in Dutch Accident & Emergency (A&E) hospital units

A survey amongst healthcare professionals
and managers

Myrna Keurhorst, MSc
Miranda Laurant, PhD



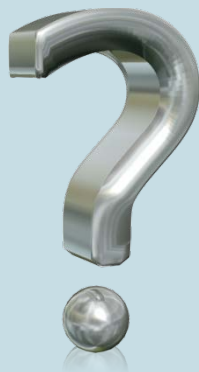
Introduction

- Worldwide highest alcohol consumption in EU
- Potential of secondary care settings



Introduction

- Worldwide highest alcohol consumption in EU
- Potential of secondary care settings



- Implementation rate of SBI
- Professionals' attitudes



Objective

1. To assess to which extent SBI is implemented by A&E-physicians and A&E-nurses in The Netherlands.
2. To evaluate if and how implementation of SBI could be improved.



Respondents

- A&E-managers (N=50)
 - Unit characteristics and policies
- A&E-physicians (N=87) and A&E-nurses (N=151)
 - Familiarity with guidelines
 - Attitudes against working with hazardous and harmful drinkers
 - SBI activities



Results physicians and nurses (1)

Familiarity with guidelines

- Physicians mainly underestimated recommended drinking limits:



Results physicians and nurses (1)

Familiarity with guidelines

- Physicians mainly underestimated recommended drinking limits: 67.8% vs 62.2% underestimation amongst nurses



Results physicians and nurses (1)

Familiarity with guidelines

- Physicians mainly underestimated recommended drinking limits: 67.8% vs 62.2% underestimation amongst nurses
- Nurses mainly overestimated recommended drinking limits:



Results physicians and nurses (1)

Familiarity with guidelines

- Physicians mainly underestimated recommended drinking limits: 67.8% vs 62.2% underestimation amongst nurses
- Nurses mainly overestimated recommended drinking limits: 16.9% vs 6.8% overestimation amongst physicians



Results physicians and nurses (2)

Attitudes against working with hazardous and harmful drinkers

- Role security
 - Physicians: 3.2 (SD 0.69)
 - Nurses: 3.6 (SD 0.72)
- Therapeutic commitment
 - Physicians: 4.2 (SD 0.60)
 - Nurses: 4.3 (SD 0.56)



Results A&E managers (3)

SBI activities

- Most common in age group up to 18 years:
 - 16% of A&E units always screen
 - 36% of A&E units always undertake BI

A&E-managers' opinions

- Importance of improving screening: **7**
- Importance of improving brief interventions: **6.8**



Results A&E managers (4)

Main perceived barriers

- Lack of:
 - Time
 - Knowledge and skills
 - Rationale
 - Follow-up after SBI
 - Patient motivation
- Is the A&E- setting suitable?



Conclusion

Room for improvement

- Uniform guidelines
- Follow-up
- Privacy
- Education

Implementation activities required

- Mainly for improving attitudes and knowledge





Questions

m.keurhorst@iq.umcn.nl

